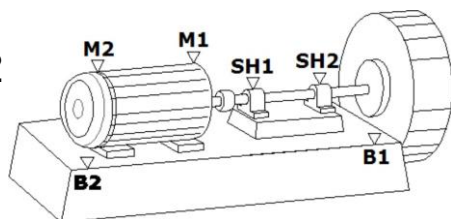
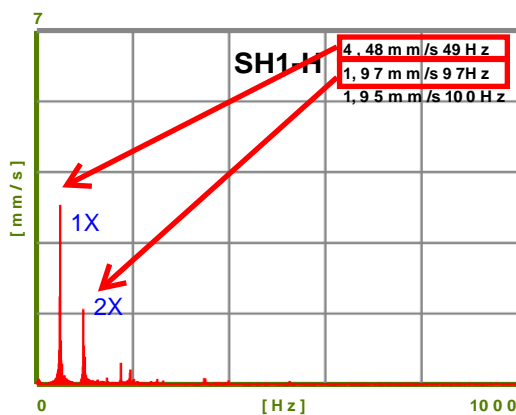
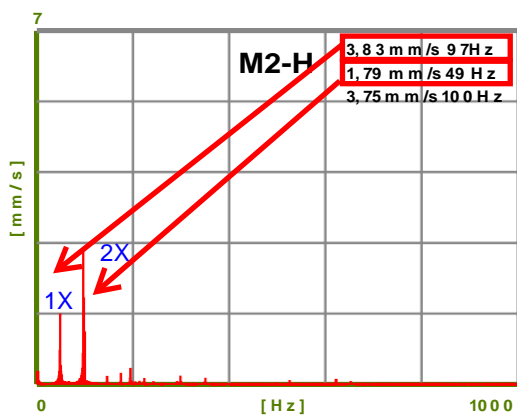
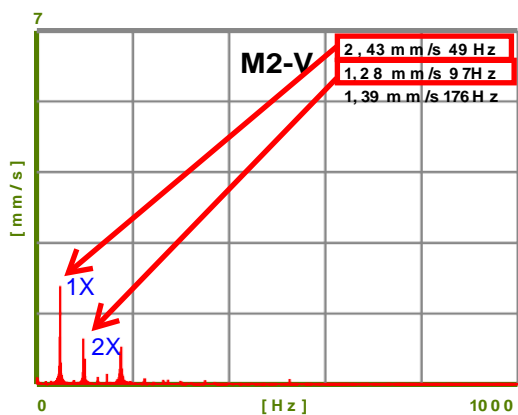
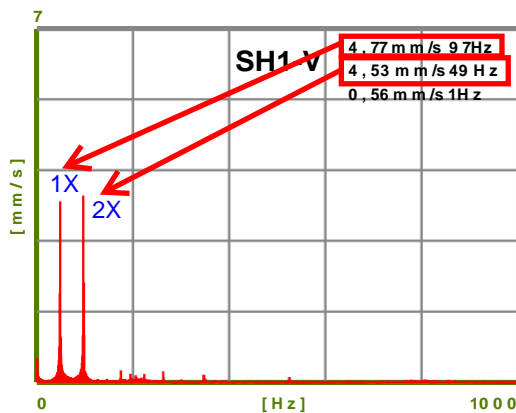
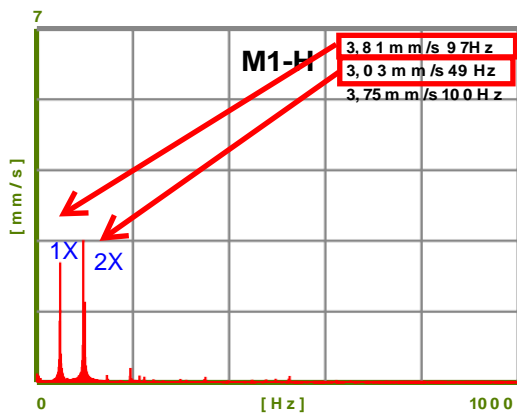
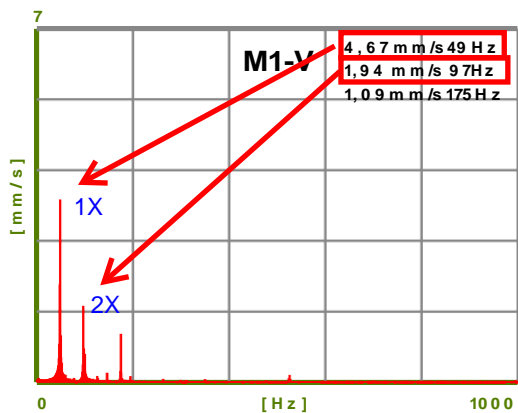


Trelleborg
 Ruma

Objekat:
 Pumpa Demi voda 2



VIBRACIJE: Veff[mm/s] - Sel[%] - BNL [db]										
point	VERTICAL			HORIZONTAL			AXIAL			rpm
M1	5,32	0	23	5,08	0	26	1,39	0	17	0
M2	3,23	0	24	4,36	0	19	1,36	0	18	0
SH1	6,79	0	13	5,10	0	15				0
SH2	4,64	0	15	4,11	0	10				0
B1										
B2										



Zaključak: Na osnovu FFT analize detektovan je izražen drugi pik koji upućuje na nesaosnost vratila pogonske i gonjene mašine. **Preporuka je dovesti vratila u saosnost.**